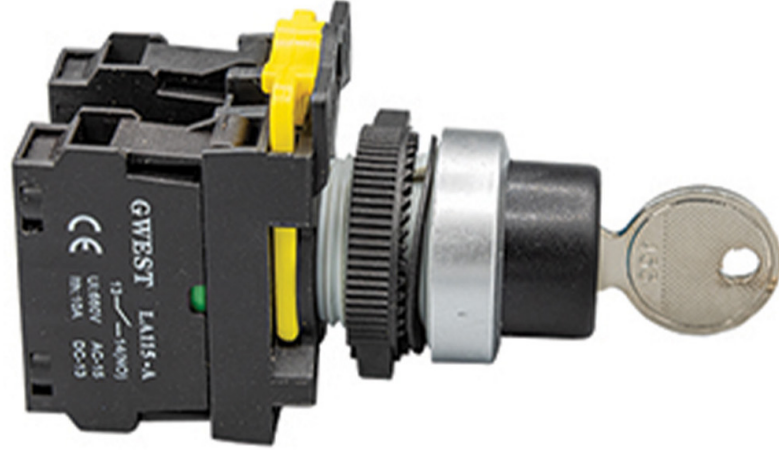


# PRODUCT DATA SHEET

## KEY-OPERATED BUTTONS



### DESCRIPTION

The main body of push buttons adopts zinc alloy and high-grade anti-flame plastic. It is necessary to press directly on the operator surface. It has a structure that prevents accidental pressing. The button and the button ring are at the same height.

### FEATURES

- It has a chrome metal protective frame.
- Three or five contact blocks can be mounted in a row.
- High electrical values.
- Easy assembly without requiring any equipment.

### MARKINGS

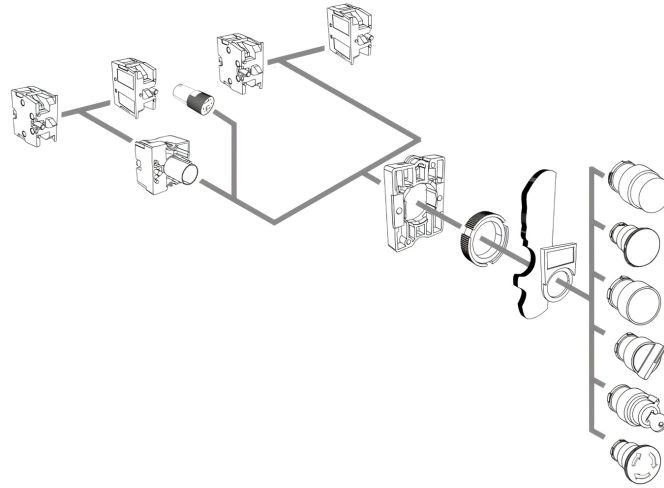


- It complies with CE standards.

# PRODUCT DATA SHEET

## KEY-OPERATED BUTTONS

### SECTIONS AND DIMENSIONS



PRODUCT CODE	CONTACT	DESCRIPTION
A5 - 20YS	2NO	1-0-2 Key-Operated Button 